



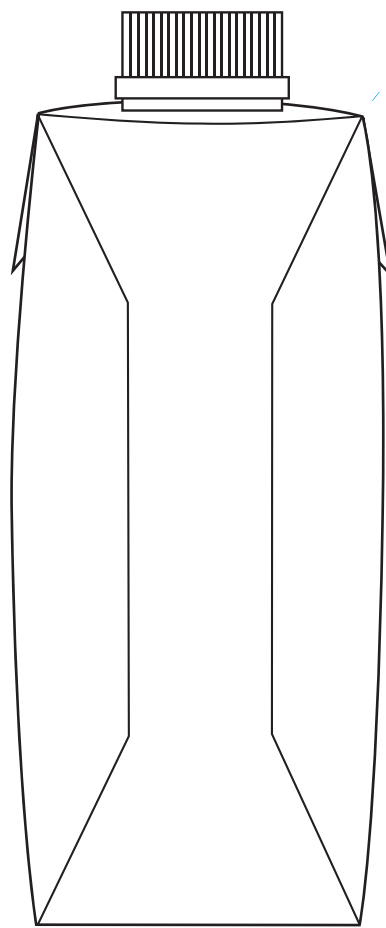
Aanleveren als:

- Open EPS bestand
- Tekst in letteromtrekken (outlines)
- PDF ter aanzicht meeleveren

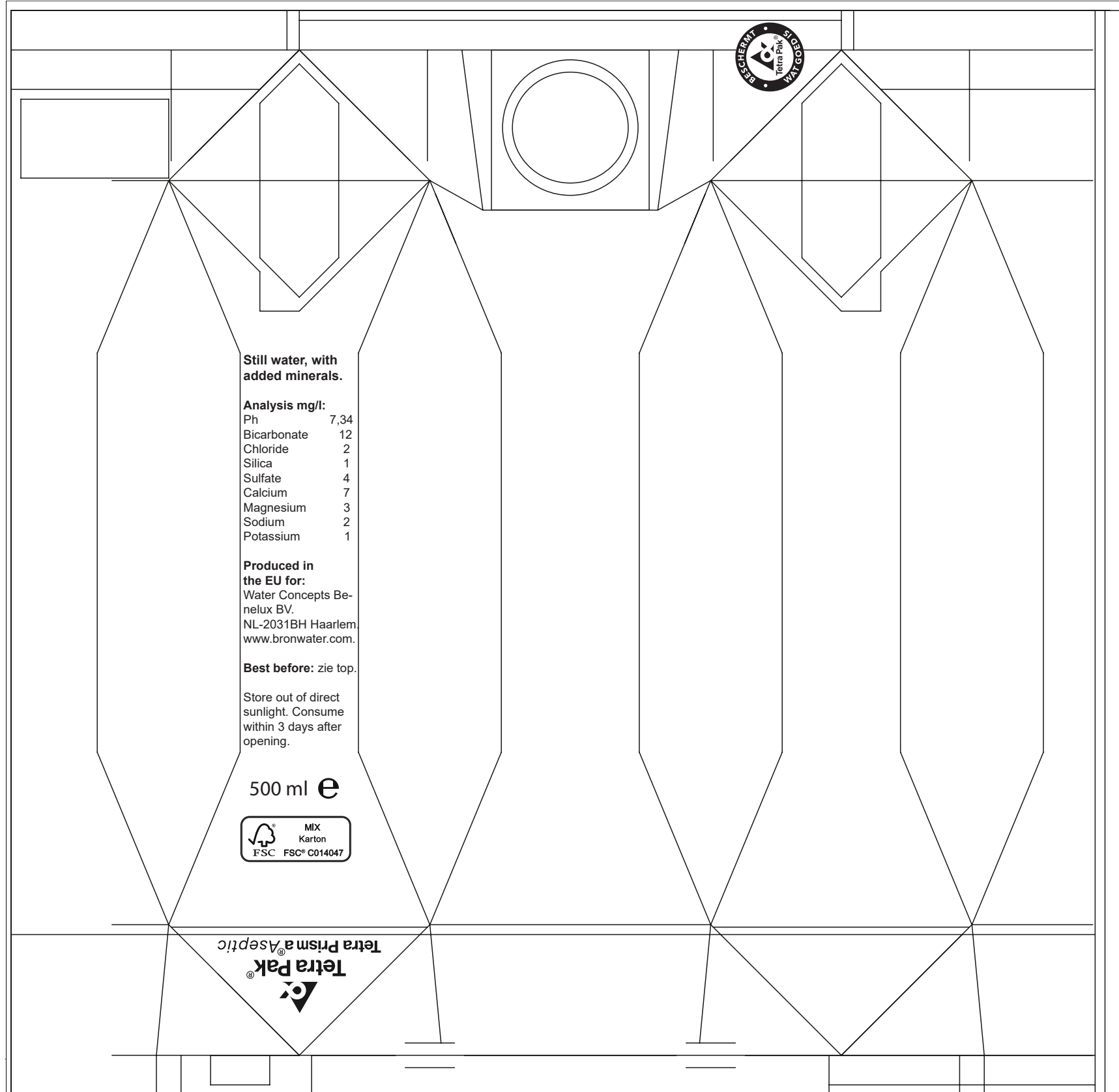
# 500 ml Tetra Prisma

Water, mineralised

- Beschrijving
- Info



153 mm



**Still water, with added minerals.**

**Analysis mg/l:**

Ph	7,34
Bicarbonate	12
Chloride	2
Silica	1
Sulfate	4
Calcium	7
Magnesium	3
Sodium	2
Potassium	1

**Produced in the EU for:**  
Water Concepts Be-nelux BV.  
NL-2031BH Haarlem.  
[www.bronwater.com](http://www.bronwater.com).

**Best before:** zie top.

Store out of direct sunlight. Consume within 3 days after opening.

500 ml e



**Tetra Pak®**  
**Tetra Prisma® Aseptic**

Deksel  
Tekstrij houden

Bodem  
blanko